

# MOVE OVER KNITS THERE'S A NEW WIPE IN TOWN

## MICROPOLX® NONWOVEN MICROFIBER TECHNOLOGY

Introducing MicroPolx® nonwoven cleanroom wipes, a first-generation technology featuring a leading edge innovative manufacturing process of 100% polyester microfiber wet-laid nonwoven performance material.

This wiper is a game changer compared to common spunlaced nonwoven options. Available in dry, presaturated, validated sterile, and low endotoxin options, Berkshire's MicroPolx® nonwoven microfiber wipers offer a complete line for all your ISO Class 5 and above applications.

### TECHNOLOGY

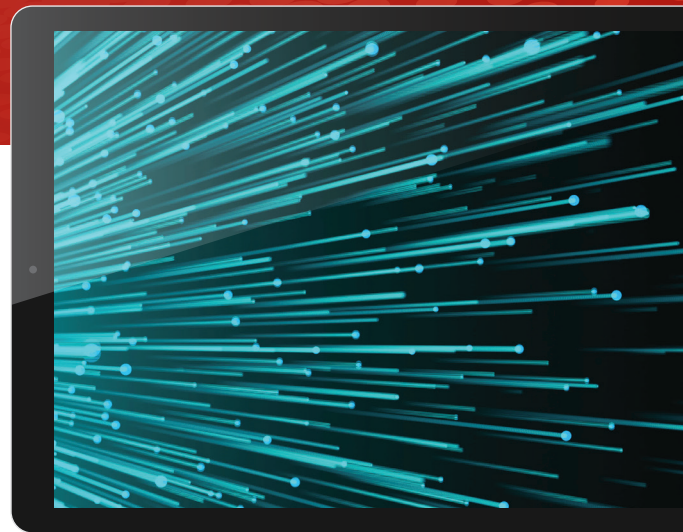
MicroPolx® Nonwoven  
Microfiber Technology

### ADVANTAGES

- Extremely soft hand
- Mechanical strength
- Anti-scratch
- Multi - directional layering
- Chemical compatibility
- Lot to lot traceability

### RESULTS

Cleans sensitive surfaces without damage while maximizing particle pickup and retention. Superior microfiber contamination removal performance.



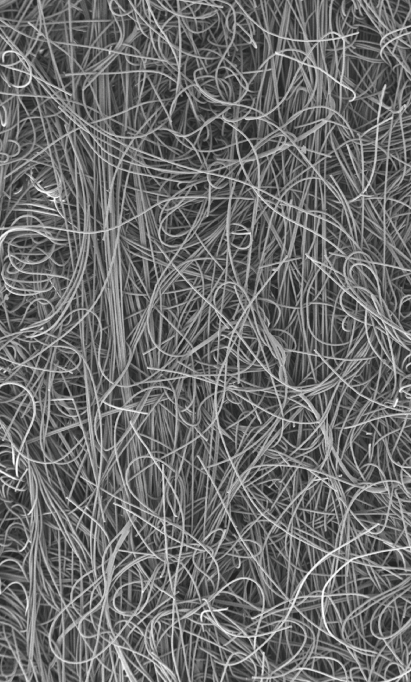
**MicroPolx®**  
NONWOVEN ADVANCED WIPER TECHNOLOGY

# Micropolix<sup>®</sup>

NONWOVEN WIPES

## TECHNICAL DATA & ORDER INFORMATION

RECOMMENDED FOR ISO CLASS 5 AND ABOVE APPLICATIONS



MICROFILAMENTS 4.5 TIMES FINER THAN COMMON POLYESTER FILAMENTS FOR SUPERIOR UNIFORMITY

BASIS WEIGHT		CALIPER	FIBERS	PARTICLES ≥ 0.5µm	SORBENCY		NON-VOLATILE RESIDUE			IONS				
g/m <sup>2</sup>	µm	µm	≥100µm/cm <sup>2</sup>	x10 <sup>3</sup> /cm <sup>2</sup>	CAPACITY ml/m <sup>2</sup>	EFFICIENCY ml/g	RATE SECONDS	H <sub>2</sub> O (g/m <sup>2</sup> )	IPA (g/m <sup>2</sup> )	Na <sup>+</sup>	K <sup>+</sup>	Ca <sup>++</sup>	Mg <sup>++</sup>	Cl <sup>-</sup>
52.2	198		18.8	1.6	234	4.5	6.0	0.0044	0.0040	37	5.3	48	9.3	48

### DRY WIPER, STACKED

#### ITEM NUMBER PRODUCT/PACKAGING

MPNW50090920 **Micropolix<sup>®</sup> NW – 9x9"** (23x23cm)  
300 SHTS /PK, 20 PKS/CS

MPNW50121220 **Micropolix<sup>®</sup> NW – 12x12"** (30x30cm)  
150 SHTS /PK, 20 PKS/CS

### 70% IPA/30% DI H<sub>2</sub>O, 45% AND 60% SATURATION OPTIONS

#### ITEM NUMBER PRODUCT/PACKAGING

SPXMPNW500112 **SatPax<sup>®</sup> MP NW – 9x9"** (23x23cm)  
75 SHTS /PK, 12 PKS/CS

SPXMPNW500112R **SatPax<sup>®</sup> MP NW – 9x9"** (23x23cm)  
75 SHTS /PK, 12 PKS/CS

### DRY WIPER, VALIDATED STERILE

#### ITEM NUMBER PRODUCT/PACKAGING

GWMPNW5T25LE **GammaWipe<sup>®</sup> MP NW – 12x12"** (30x30cm)  
20 SHTS /PK, 25 PKS/CS

### VALIDATED STERILE, 70% IPA/30% DI H<sub>2</sub>O, 60% SATURATION

#### ITEM NUMBER PRODUCT/PACKAGING

SSPMPNW500124 **Sterile SatPax<sup>®</sup> MP NW – 9x9"** (23x23cm)  
30 SHTS /PK, 24 PKS/CS

#### Notes:

- Technical data represented in this table are typical values at the time of publication. These should not be used as product specifications.
- Due to differences in test methods applied and equipment utilized by different wiper manufacturers, valid product comparisons may only be obtained through side-by-side testing in the same test facility, under similar conditions.
- Third party testing can be performed upon request.