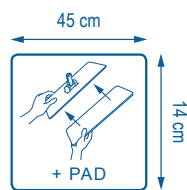




Dry Dispomop®



SMART TEXTILES





SMART TEXTILES

Dry Dispomop®

DISPOSABLE MICROFIBER GAUZE FOR STATIC DRY MOPPING

Floor dust is proven to be the major source of bacteria that we breathe in as we re-suspend it by simple air displacement. Since one gram of dust can carry up to 1.5 million bacteria, dust elimination constitutes the most important stage in maintaining a hygienic environment.



Until now, mopping with disposable gauze soaked in paraffin was the only option for eliminating floor dust without re-suspending it. These greasy gauzes, in addition to dirtying the floor, are very light and easy to tear. They are placed on special brooms which require users to be permanently stooped.

Dry Dispomop® is a magic 100 % microfiber alternative to this outdated method. It works by electrostatic effect, attracting the dust dry like a magnet. No more dirty floors! The *Dry Dispomop®* gauze is nearly 3 times thicker than a soaked gauze and never tears. It is placed without stooping onto a classic Velcro device equipped with a *PAD*.

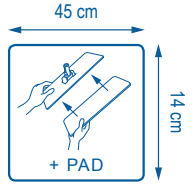


Dry Dispomop® can be discarded after use for greater hygiene, preventing the transfer of dirt to washing machines. It will save you precious time and win over even those most reluctant to undertake this stage of cleaning essential to good hygiene.



SMART TEXTILES

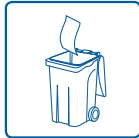
Dry Dispomop®



TECHNICAL SPECIFICATIONS

 100 384
 100 385

100 % microfiber
 (70 % polyester /
 30 % polyamide)



Description: Disposable microfiber gauze for static dry mopping

Packaging: Box of 15 bags of 50 Dry Dispomop®

Construction: Non-woven

Weight per m²: 67 g

Dry weight: 4,3 g

Weight when wrung: /

Absorption rate (water): /

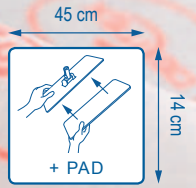
Finish: Straight cutting

Yarn size: 0,20 dTex



Dry Dispomop®

SMART TEXTILES



PROTOCOL

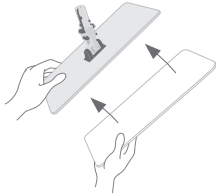


Operating theaters / Intensive care units

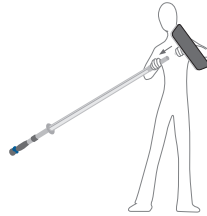


Healthcare

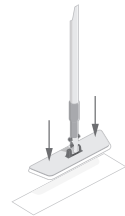
- ① Set the PAD on the frame



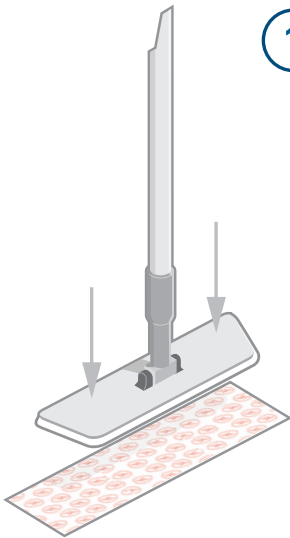
- ② Set the frame with its PAD on the end of the handle



- ③ Place the handle + frame + PAD on the mop on the floor



- ① Place the handle with frame on the gauze on the floor



- ② Sweep the floor starting at the back of the room and work towards the entrance

