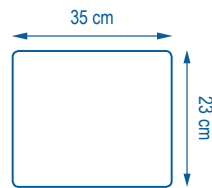




***MINI* 350**



SMART TEXTILES





SMART TEXTILES

Mini 350

EXTRA HEAVY-DUTY MINI MICROFIBER CLOTH

Like the other products in the *Mini* range, *Mini 350* measures 23 x 35 cm, is used flat on the surface, naturally folds in two and offers perfect protection for your hand.



Mini 350 is 100 % microfiber (70 % polyester / 30 % polyamide) and available only in grey. The overcast stitching (around the edge) and the label are indestructible and add a touch of colour with the choice of blue, yellow, green and red.



This heavy-duty microfiber cloth can be washed 300 times and can clean really filthy surfaces. It is also ideal for washing your car. That is why we chose grey as it shows the dirt less and is more wash-resistant.

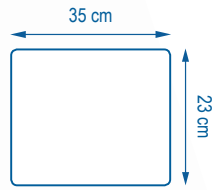


Together with *Mini 200*, you have two *Mini Basic* products for both absorption, polishing and drying and simple cleaning.




SMART TEXTILES




MINI 350



TECHNICAL SPECIFICATIONS

-  100 875
-  100 876
-  100 877
-  100 878

100 % microfiber
(70 % polyester /
30 % polyamide)

 X300
  60°C
  NO SOFTENER



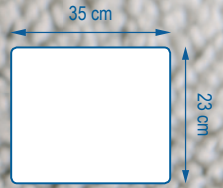
Description:	Extra heavy-duty MiNi microfiber cloth
Packaging:	Box of 10 bags of 5 MiNi 350
Construction:	Warp knitting
Weight per m²:	350 g
Dry weight:	28 g
Weight when wrung:	68 g
Absorption rate (water):	6 MiNi 350 for 1/2 L of solution
Finish:	Overlock sewing
Yarn size:	Continuous yarn 0,20 dTex





SMART TEXTILES

Mini 350



PROTOCOL



Cleaning companies



Industry



Automotive

BLUE

Bedroom floors & furniture and common areas



Floors and furniture in general

YELLOW

Quarantine or risk areas



Bathrooms, showers, washbasins, tiles

GREEN

Eating areas, kitchens, bars, self-service areas

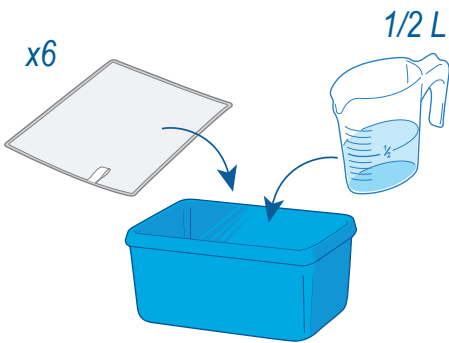


RED

Toilets, urinals, bathrooms, showers, washbasins, tiles



Toilets, urinals

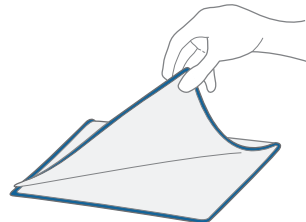


Give the microfiber cloth a fast spin*



*Optional step

1 Fold in two



2 Use flat on the surface, using a different face every time you move to a new surface



Always start with the cleanest areas and finish with the most soiled areas.