

HLD
CLEAN
CONSULT

hld

YOUR SWISS PARTNER



HLD Clean Consult SA
Champs Montants 14 b
CH-2074 Marin



+41 32 755 73 53

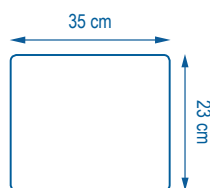


+41 32 755 73 55



info@hld.ch

MINI 350



SMART TEXTILES





SMART TEXTILES

Mini 350

EXTRA HEAVY-DUTY MINI MICROFIBER CLOTH

Like the other products in the *Mini* range, *Mini 350* measures 23 x 35 cm, is used flat on the surface, naturally folds in two and offers perfect protection for your hand.



Mini 350 is 100 % microfiber (70 % polyester / 30 % polyamide) and available only in grey. The overcast stitching (around the edge) and the label are indestructible and add a touch of colour with the choice of blue, yellow, green and red.

This heavy-duty microfiber cloth can be washed 300 times and can clean really filthy surfaces. It is also ideal for washing your car. That is why we chose grey as it shows the dirt less and is more wash-resistant.

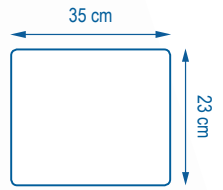


Together with *Mini 200*, you have two *Mini Basic* products for both absorption, polishing and drying and simple cleaning.



SMART TEXTILES

MINI 350



-  100 875
-  100 876
-  100 877
-  100 878

TECHNICAL SPECIFICATIONS

100 % microfiber
(70 % polyester /
30 % polyamide)



X300



MAX. 95°C



NO
SOFTENER



Description: Extra heavy-duty MiNi microfiber cloth

Packaging: Box of 10 bags of 5 MiNi 350

Construction: Warp knitting

Weight per m²: 350 g

Dry weight: 28 g

Weight when wrung: 68 g

Absorption rate (water): 6 MiNi 350 for 1/2 L of solution

Finish: Overlock sewing

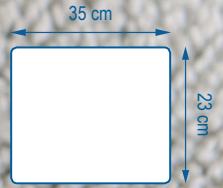
Yarn size: Continuous yarn 0,20 dTex

MINI basic



SMART TEXTILES

MINI 350



PROTOCOL



Cleaning companies



Industry



Automotive

BLUE

Bedroom floors & furniture and common areas



Floors and furniture in general

YELLOW

Quarantine or risk areas



Bathrooms, showers, washbasins, tiles

GREEN

Eating areas, kitchens, bars, self-service areas

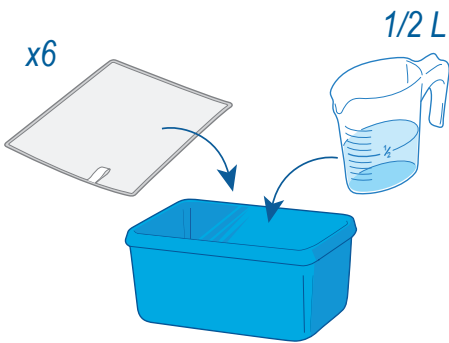


RED

Toilets, urinals, bathrooms, showers, washbasins, tiles



Toilets, urinals

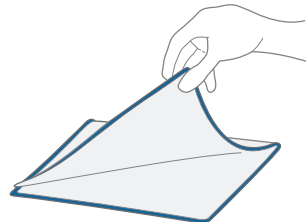


Give the microfiber cloth a fast spin*



*Optional step

1 Fold in two



2 Use flat on the surface, using a different face every time you move to a new surface



Always start with the cleanest areas and finish with the most soiled areas.