

HLD
CLEAN
CONSULT

hld

YOUR SWISS PARTNER



HLD Clean Consult SA



+41 32 755 73 53

Champs Montants 14 b



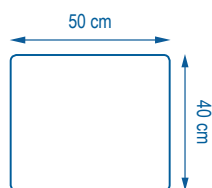
+41 32 755 73 55

CH-2074 Marin



info@hld.ch

V200



SMART TEXTILES



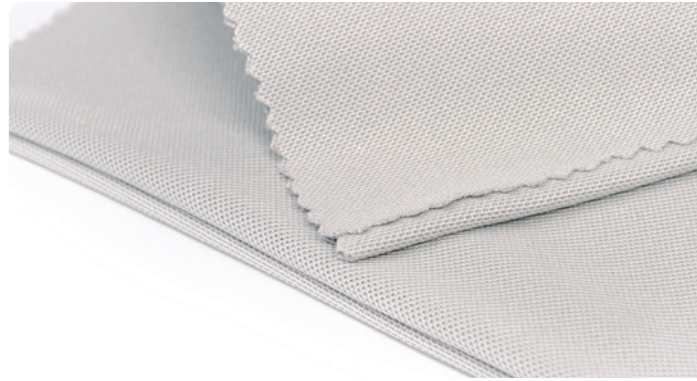


SMART TEXTILES

V200

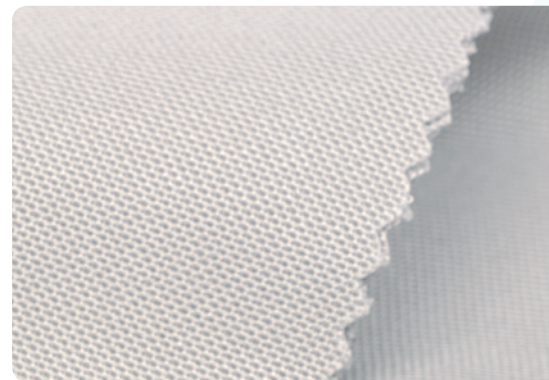
MICROFIBER CLOTH FOR SMOOTH SURFACES (STAINLESS STEEL, WINDOWS, MIRRORS...)

V200 is the demo product par excellence! It's not afraid of a greasy mark on a mirror: just add a drop of water to deal with it in a single wipe, for unbelievable results.



You often wonder whether it's better used wet or dry. V200 is magic, it can do both. Wring out well if used wet. Used dry with a spray it'll work miracles leaving surfaces impeccably dry in an instant.

At home on windows, mirrors and stainless steel, 100 % microfiber, large size (40 x 50 cm), it can also be used to dry glasses. Windows cleaners love it. One side is a bit rougher to deal with stubborn stains but don't give yourself a headache, both sides will leave the same finish.

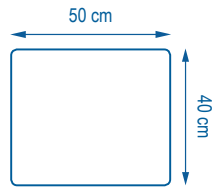


With a 300-wash life, it's well worth the investment. But if it feels a bit big for your hand, its little sister, *Mini 260*, can delight you for less.



SMART TEXTILES

V200



TECHNICAL SPECIFICATIONS



100 845

100 % microfiber
(70 % polyester /
30 % polyamide)



X300



MAX. 95°C



NO
SOFTENER



Description: Microfiber cloth for smooth surfaces (stainless steel, windows, mirrors...)

Packaging: Box of 10 bags of 5 V200

Construction: Circular knit (Jersey)

Weight per m²: 200 g

Dry weight: 40 g

Weight when wrung: 71 g

Absorption rate (water): 6 V200 for 1/2 L of solution

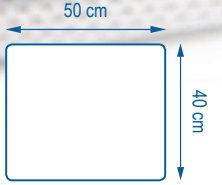
Finish: Wave cutting

Yarn size: 0,20 dTex



V200

SMART TEXTILES



PROTOCOL



Retirement homes



Local authorities



Hotels



Restaurants



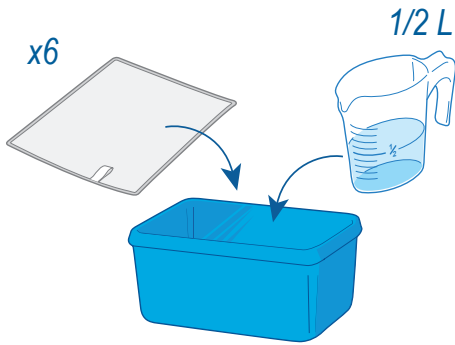
Cafés



Cleaning companies



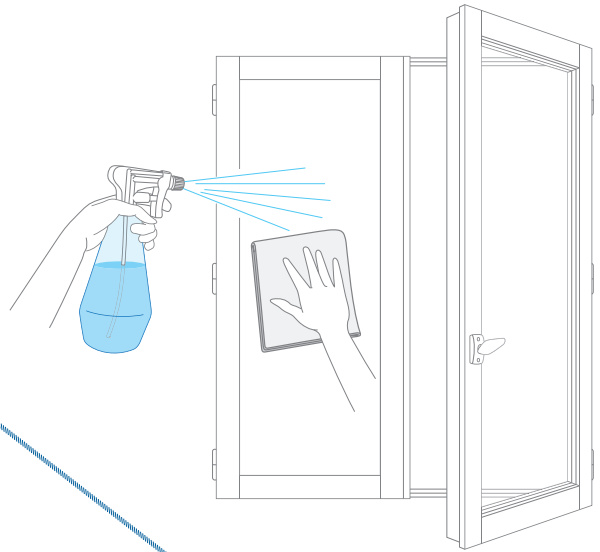
Automotive



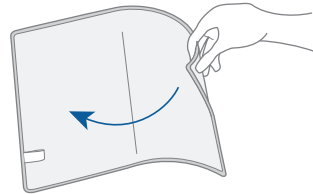
Give the microfiber cloth a fast spin*



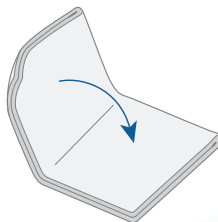
*Optional step



1 Fold in two



2 Then fold again in two



3 Use flat on the surface, using a different face every time you move to a new surface

