



Curve



SMART TEXTILES





SMART TEXTILES

Curve

ERGONOMIC CONNECTION PIECE TO EASE THE "S" SHAPE MOVEMENT

A terrific little item, but what does it do? How does it work? It doesn't look like anything I've ever seen. Don't panic, we'll explain! *Curve* is placed between a handle and a frame to create a curve. So now you know where to put it... but that still doesn't answer the question: what does it do???



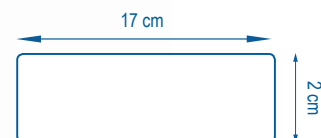
Once positioned between the handle and the frame, the curve created by *Curve* amplifies the movement of your wrists, easing the "S" shape movement during long floor dusting sessions. Technically speaking, it limits musculoskeletal disorders (MSD).

Moving the frame away from the handle, *Curve* also removes some of the force applied to the frame, making it glide more easily over the floor. This is particularly noticeable when dusting with microfiber mops, which naturally attract the dust.

No force needed!



Curve adapts to your existing equipment at a good price so no heavy investment needed! Give it a go.



CARACTÉRISTIQUES TECHNIQUES



100 898

Nylon and
Polyoxymethylen



Description: Ergonomical connection to ease the «S» shape movement

Packaging: Box of 10 Curves

Counterpart: Handles get 12 cm longer with the curve

Weight: 52 g

PROTOCOL



Operating
theaters /
Intensive care
units



Healthcare



Retirement
homes



Local
authorities



Hotels



Restaurants



Cafés



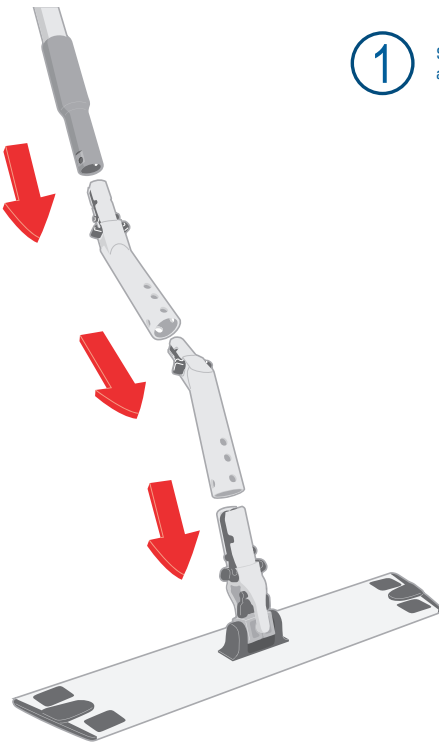
Cleaning
companies



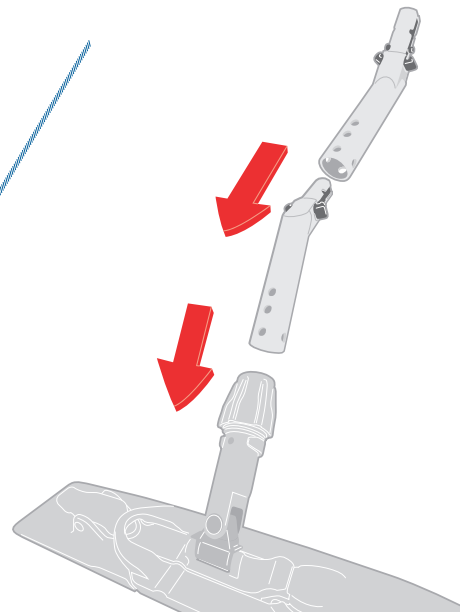
Industry

1

Set the Curve between the handle
and the frame



Aluminium Frame - universal aluminium
frame with ergonomic ball joint



Pockets or Flaps frame with
universal ball joint

2

Easily make wide movements
thanks to the Curve

