

HLD
CLEAN
CONSULT



YOUR SWISS PARTNER



HLD Clean Consult SA
Champs Montants 14 b
CH-2074 Marin



+41 32 755 73 53

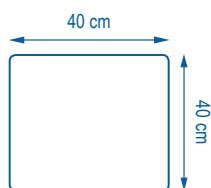


+41 32 755 73 55



info@hld.ch

T200



SMART TEXTILES





SMART TEXTILES

T200

ECONOMY MICROFIBER CLOTH FOR ANY TYPE OF SURFACE

Its leitmotiv? The longer it is, the... longer it is!!



In terms of its durability and its size (40 x 40 cm), *T200*, a basic microfiber cloth, is a real off-roader. Not afraid of being lost, discarded or torn as its price allows it. This 4x4 of cleanliness is notable for its size/efficiency/price ratio.

A spring walk in pastel colours. Allocation by work area (blue for furniture, red for bathrooms, etc.) is essential for preventing cross-contamination and controlling hygiene.

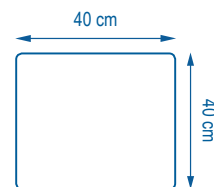


If folding in four is an insurmountable obstacle for you, don't use it in a ball, choose its little sister, *Mini 200*, which solves the problem by naturally folding in two for use flat on the surface. So you can enjoy all the features of *T200* at a *Mini* price.



SMART TEXTILES

T200



TECHNICAL SPECIFICATIONS

	100 548
	100 549
	100 550
	100 551

100 % microfiber
(80 % polyester /
20 % polyamide)



X200



NO
SOFTENER



Description: Economy microfiber cloth for any type of surface

Packaging: Box of 25 bags of 10 T200

Construction: Warp knitting

Weight per m²: 200 g

Dry weight: 32 g

Weight when wrung: 87 g

Absorption rate (water): 6 T200 for 1/2 L of solution

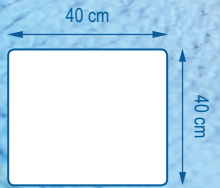
Finish: Overlock sewing

Yarn size: Continuous yarn 0,22 dTex



SMART TEXTILES

T200



PROTOCOL



Local authorities



Hotels



Restaurants



Cafés



Cleaning companies

BLUE

Bedroom floors & furniture and common areas



Floors and furniture in general

YELLOW

Quarantine or risk areas



Bathrooms, showers, washbasins, tiles

GREEN

Eating areas, kitchens, bars, self-service areas

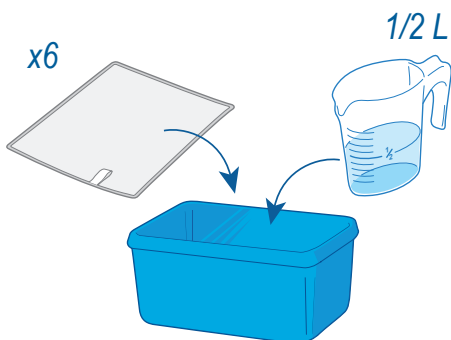


RED

Toilets, urinals, bathrooms, showers, washbasins, tiles



Toilets, urinals

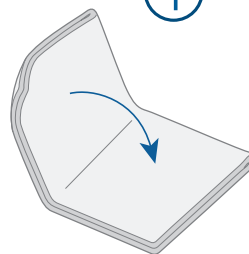


Give the microfiber cloth a fast spin*



*Optional step

1 Fold in four



2 Use flat on the surface, using a different face every time you move to a new surface



Always start with the cleanest areas and finish with the most soiled areas.