

For industrial applications

Toraysee MC

Features

High wiping performance

Randomly configured micro fibers contact the surface to take dirt into the cloth. It is suitable to wiping off sebum.

High lint-free performance

The end of cloth of 100% filament is fusion-cut and the cloth raises little dust. Product for clean room use is cleaned with ultra pure water and packaged in the clean room to reduce particles and metallic ions.

Dimension stability

The woven structure is fine and thin. It is excellent in dimension stability and suitable to cleaning small parts.

Chemical resistance

This type of 100% polyester can be used with general solvents.

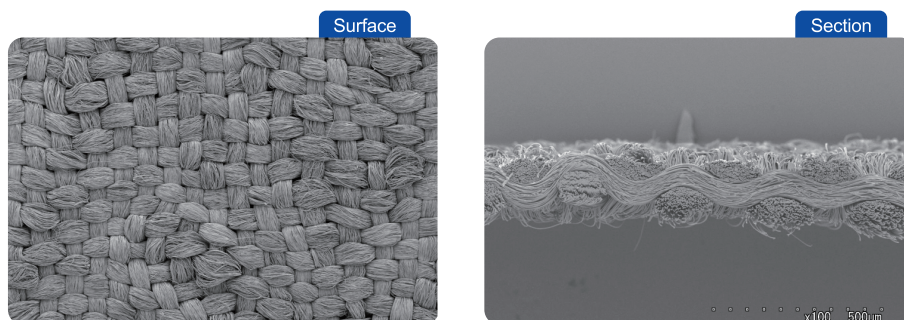
High performance Cleaning Cloth

Toraysee® MC

c l e a n i n g c l o t h

Toraysee MC is a cleaning cloth for industrial applications of high density fabric (plain fabric) using TORAY micro fiber of 0.07 dtex (approx. 2 µm in diameter) single filament fineness.

SEM photograph



Structure

Material	Construction	Arial fiber weight	Thickness
Polyester100%	Fabric (Plain)	70 g / m ²	0.16mm

Specifications

Use classifications	Item No.	Specification				Delivery lot
		Cut size (cm)	Cut method	Ultra pure water cleaning	Packaging	
For cleanroom use	CC1919H	19×19	Fusion cutting	Yes	10pieces×10bags /Double package	100 pieces
	CC2424H	24×24	Fusion cutting	Yes	10pieces×10bags /Double package	100 pieces
For general environment use	MC1919H-G9	19×19	Fusion cutting	No	10pieces×10bags	100 pieces
	MC2424H-G9	24×24	Fusion cutting	No	10pieces×10bags	100 pieces

*1 Cloth for clean room use is packaged in a Class 100 clean room after ultra pure water cleaning. Cloth for general environment use is packaged in the general environment without ultra pure water cleaning. *2 Data in this material are not guaranteed values but JIS values or our test results according to JIS. Customers should check this product for safety and adaptability before use. *3 For further product information, please contact the below. *4 Orders for special sizes and roll type cloth will be accepted separately. Please contact us.

Manufactured and marketed by
TORAYSEE Sales &
Marketing Department,
Toray Industries, Inc.

Nihonbashi Muromachi 2-1-1, Chuo-ku,
Tokyo, Japan 103-8666
Tel. +81-3-3245-5993
Fax. +81-3-3245-5279
<http://www.toraysee.jp/>